

CERTIFICATE OF ANALYSIS

PRODUCT NAME: CBD Tincture - Mint
PRODUCT STRENGTH: 1350 mg
FILL LOT NUMBER: 200819A
TINCTURE BATCH: 200831A
BEST BY DATE: 03/03/2022
HEMP EXTRACT LOT 112619

Click on the links to view third-party reports

Physical Attributes

Test	Method	Specification	Results
Color	SOP-100	Golden to Amber	PASS
Odor	SOP-100	Characteristic - Olive and hemp, minty	PASS
Appearance	SOP-100	Golden to Amber oil in brown glass bottle with dropper	PASS
Primary Package Eval.	SOP-132	Container clean and free of filth. Container caps tight and shrink bands intact	PASS
Secondary Package Eval.	SOP-132	Labeling Compliance Checked, Cartons sturdy and clean. Sufficient cushion material exists. Box taped and secure.	PASS

Review of Third-Party Analysis

Panel	Method	Specification	Results*	Pass/Fail
Potency - Total CBD	SOP-111	1350-1687.5 mg CBD LOQ**: 10 PPM† (0.001%)	1380 mg	PASS
Potency - D9-THC	SOP-111	None Detected LOQ: 10 PPM (0.001%)	ND	PASS
Compliant Pesticide Panel	SOP-111	WIP-100008 : Product specification for Tinctures, Oregon Action limits apply	ND	PASS
Microbial - Stec E.Coli	SOP-111	Complies with USP 61/62	Below LOQ	PASS
Microbial - Salmonella	SOP-111	Complies with USP 61/62	Below LOQ	PASS
Microbial - Yeast and Mold	SOP-111	Complies with USP 61/62	Below LOQ	PASS
CA Compliant Heavy Metal Panel	SOP-111	Arsenic (As): ≤1.5 PPM Cadmium (Cd): ≤0.5 PPM Mercury (Hg): ≤1.0 PPM Lead (Pb): ≤0.5 PPM	ND	PASS

**Level of Quantitation, † Parts Per Million

Quality Certified Kei Horikawa 09/08/2020
 Kei Horikawa _____
 Quality Control Manager Date

OEVOO 1350P

Certificate of Analysis



total cannabinoids **1455 mg**
 per **30mL**
 Δ9-THC 0.0 mg
 THCa 0.0 mg
 total THC 0.0 mg
 CBD 1380.0 mg
 CBDa 0.0 mg
 total CBD 1380.0 mg

Lot# 200819A

This Product Has Been Tested and Complies with 7USC1639o(1) Definition of Hemp



Stillwater Laboratories

<https://portal.a2la.org/scopepdf/4961-01.pdf>

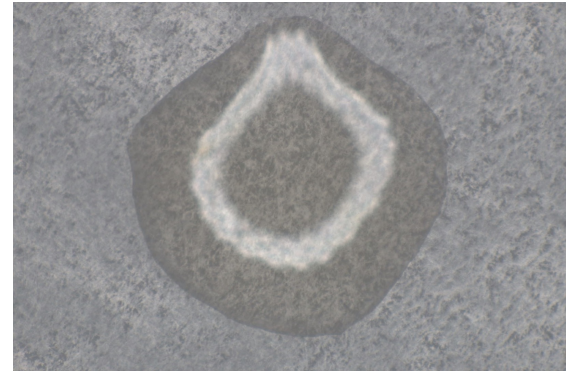
Sample Handling

test ID sample wt 30.0 g
 type concentrate order 8192
 lab ID 0HR31 sample date 8/26/2020
 unit 30mL unit weight 27.6 g

Methods

method	equipment
weights	MSP-7.3.1.3 AUX120.1
potency	MSP-7.5.1.5 LC-2030
terpenes	MSP-7.5.1.7 QP2020/HS20
pesticides	MSP-7.5.1.8 LC-8060
mycotoxins	MSP-7.5.1.8 LC-8060
microbial	MSP-7.5.1.1 AriaMx RTPCR
solvents	MSP-7.5.1.6 QP2020/HS20
metals	MSP-7.5.1.1 ICPMS2030

concentrate



Potency	per 30mL	estimated error	Terpenes	%	estimated error	%	estimated error	%	estimated error
tetrahydrocannabinolic acid (THCa)	0%	0.0 mg ± 0.45 mg	terpenes not tested / not required						
Δ ⁹ -tetrahydrocannabinol (Δ ⁹ THC)	0%	0.0 mg ± 0.45 mg							
Δ ⁸ -tetrahydrocannabinol (Δ ⁸ THC)	0%	0.0 mg ± 0.45 mg							
tetrahydrocannabivarin (THCv)	0%	0.0 mg ± 0.45 mg							
cannabidiolic acid (CBDA)	0%	0.0 mg ± 0.45 mg							
cannabidiol (CBD)	5%	1380.0 mg ± 6.61 mg							
cannabidivarin (CBDv)	0%	0.0 mg ± 0.45 mg							
cannabigerolic acid (CBGA)	0%	0.0 mg ± 0.45 mg							
cannabigerol (CBG)	27%	75.3 mg ± 1.61 mg							
cannabinol (CBN)	0%	0.0 mg ± 0.45 mg							
cannabichromene (CBC)	0%	0.0 mg ± 0.45 mg							

Pesticides (MT) MT limit 0HR31 LOQ Pesticides (other) 0HR31 LOQ

pesticides not tested / not required not tested / not required

Toxic Metals MT limit 0HR31 LOQ

metals not tested / not required

Microbial MT limit 0HR31 LOQ

microbial not tested

Comments

Density - 0.919368g/mL

• All testing was completed onsite at 6073 US93N, Olney MT •• Potency (cannabinoid concentration) is calculated from the equation: [cannabinoid] = [cannabinoid]_{HPLC} x volume_{dilution}/m_{dry}. Terpene concentration is calculated from the equation: [terpene] = (terpene mass)_{GCMS} / m_{dry}. ••• Decarboxyted cannabinoid concentration is calculated from the equation XXX_{total} = 0.877 x XXX_a + XXX •••• Standards are used to calibrate the resulting data and estimate error using a standard estimate of error method; this is combined with error from weighing and dilution using the propagation of error formula s_g² = Σ(∂f/∂i)²s_i² where i is the contributor to error. The 95% confidence range is calculated from the equation: (concentration) ± t_{CL90} x s_g. Sampling error is not

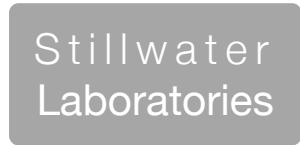
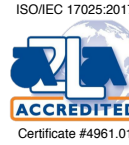
Certified by:

Kyle Larson, MSc (Biology)
 Deputy Director
 6073 US93N, Olney MT 59927
 406-881-2019 rdb@stwlabs.com



total cannabinoids **84.7%**
 CBD decarb total 80.7%
 Δ9-THC ND

This Product Has Been Tested and Complies with 7USC1639o(1) Definition of Hemp

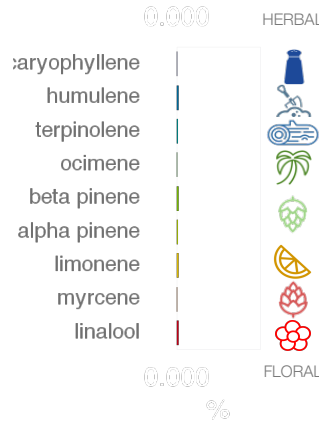


https://portal.a2la.org/scopepdf/4961-01.pdf

Sample Handling

test ID sample date 2/24/20 4:49 PM
 order 6654 labID OBR66 weight
 source

Methods	method	equipment
weights	MSP-7.3.1.3	AUX120.1
potency	MSP-7.5.1.5	LC-2030
terpenes	MSP-7.5.1.7	QP2020/HS20
pesticides	MSP-7.5.1.8	LC-8060
mycotoxins	MSP-7.5.1.8	LC-8060
microbial	MSP-7.5.1.9	Hardy Diag
solvents	MSP-7.5.1.6	QP2020/HS20
metals	MSP-7.5.1.10	ICPMS2030



concentrate



Potency	%	estimated error	Terpenes	%	estimated error	%	estimated error	%	estimated error		
tetrahydrocannabinolic acid (THCa)	ND	± 0.02 %	β-myrcene	0.001%	± 0.0017%	camphene	0.002%	± 0.0017%	guaiol	0.000%	± 0.0017%
Δ ⁹ -tetrahydrocannabinol (Δ ⁹ THC)	ND	± 0.02 %	β-caryophyllene	0.001%	± 0.0017%	Δ3-carene	0.003%	± 0.0018%	β-bisabolol	0.002%	± 0.0017%
Δ ⁸ -tetrahydrocannabinol (Δ ⁸ THC)	ND	± 0.02 %	alpha-pinene	0.005%	± 0.0018%	a-terpinene	0.000%	± 0.0016%	eucalyptol	0.005%	± 0.0018%
tetrahydrocannabivarin (THCv)	ND	± 0.02 %	β-pinene	0.008%	± 0.0019%	para-cymene	0.009%	± 0.0019%			
cannabidiolic acid (CBDa)	ND	± 0.02 %	D-limonene	0.009%	± 0.0019%	g-terpinene	0.010%	± 0.0019%			
cannabidiol (CBD)	80.7%	± 0.73 %	linalool	0.008%	± 0.0019%	(-)-isopulegol	0.000%	± 0.0016%	total terpenes		0.08%
cannabidivarin (CBDv)	ND	± 0.02 %	ocimene	0.002%	± 0.0034%	geraniol	0.002%	± 0.0017%			
cannabigerolic acid (CBGa)	ND	± 0.02 %	terpinolene	0.003%	± 0.0018%	cis-nerolidol	0.000%	± 0.0016%			
cannabigerol (CBG)	4.02%	± 0.16 %	alpha-humulene	0.007%	± 0.0019%	trans-nerolidol	0.004%	± 0.0018%			
cannabinol (CBN)	ND	± 0.02 %									
cannabichromene (CBC)	ND	± 0.02 %									

Solvents	MT limit	OBR66	LOQ	Pesticides (MT)	MT limit	OBR66	LOQ	Pesticides (other)	OBR66	LOQ
propane	5,000	0 ppm	<10ppm	abamectin	2.50 ppm	0.00 ppm	<10ppb	acephate	0.00 ppm	<10ppb
butanes	5,000	0 ppm	<10ppm	acequinocyl	10.00 ppm	0.00 ppm	<10ppb	acetamiprid	0.00 ppm	<10ppb
pentanes	5,000	0 ppm	<10ppm	bifenazate	1.00 ppm	0.00 ppm	<10ppb	aldicarb	0.00 ppm	<10ppb
hexanes	290	0 ppm	<10ppm	bifenthrin	1.00 ppm	0.00 ppm	<10ppb	azoxystrobin	0.00 ppm	<10ppb
cyclohexane	3,880	0 ppm	<10ppm	chlormequat cl.	5.00 ppm	0.00 ppm	<10ppb	boscalid	0.00 ppm	<10ppb
heptanes	5,000	0 ppm	<10ppm	cyfluthrin	5.00 ppm	0.00 ppm	<80ppb	carbaryl	0.00 ppm	<10ppb
methanol	3,000	0 ppm	<10ppm	diaminozide	5.00 ppm	0.00 ppm	<10ppb	carbofuran	0.00 ppm	<10ppb
isopropanol	5,000	0 ppm	<10ppm	etoxazole	1.00 ppm	0.00 ppm	<10ppb	chloantraniliprole	0.00 ppm	<10ppb
acetone	5,000	0 ppm	<10ppm	fenoxycarb	1.00 ppm	0.00 ppm	<10ppb	chlorpyrifos	0.00 ppm	<10ppb
ethyl acetate	5,000	0 ppm	<10ppm	imazalil	1.00 ppm	0.00 ppm	<10ppb	clofentezine	0.00 ppm	<10ppb
benzene	2	0 ppm	<0.2ppm	imidacloprid	2.00 ppm	0.00 ppm	<10ppb	cypermethrin	0.00 ppm	<10ppb
toluene	890	0 ppm	<10ppm	myclobutanil	0.60 ppm	0.00 ppm	<10ppb	diazinon	0.00 ppm	<10ppb
xylenes	2,170	0 ppm	<10ppm	paclobutrazol	2.00 ppm	0.00 ppm	<10ppb	dichlorvos	0.00 ppm	<10ppb
chloroform	2	0 ppm	<0.2ppm	pyrethrins	5.00 ppm	0.00 ppm	<10ppb	dimethoate	0.00 ppm	<10ppb
dichloromethane	600	0 ppm	<10ppm	spinosad	1.00 ppm	0.00 ppm	<10ppb	etofenprox	0.00 ppm	<10ppb
				spiromesifen	1.00 ppm	0.00 ppm	<10ppb	fenpyroximate	0.00 ppm	<10ppb
				spirotetramat	1.00 ppm	0.00 ppm	<10ppb	fipronil	0.00 ppm	<10ppb
				trifloxystrobin	1.00 ppm	0.00 ppm	<10ppb	flonicamid	0.00 ppm	<10ppb

Toxic Metals	MT limit	OBR66	LOQ
arsenic	2 ppm	0.0 ppm	<10ppb
cadmium	0.8 ppm	0.0 ppm	<10ppb
lead	1.2 ppm	0.0 ppm	<10ppb
mercury	0.4 ppm	0.0 ppm	<10ppb

Microbial	MT limit	OBR66	LOQ
<i>E. coli</i>	10 CFU	0 CFU	<10 CFU/g
Salmonella sp.	10 CFU	0 CFU	<10 CFU/g
molds	10000 CFU	0 CFU	<10k CFU/g
Aflatoxin B1,B2,G1,G2	20 ppb	0 ppb	<20 ppb
Ochratoxin A	20 ppb	0 ppb	<20 ppb

Comments

• All testing was completed onsite at 6073 US93N, Olney MT •• Potency (cannabinoid concentration) is calculated from the equation: [cannabinoid] = [cannabinoid]_{HPLC} x volume_{dilution} / m_{dry}. Terpene concentration is calculated from the equation: [terpene] = (terpene mass)_{GCMS} / m_{dry}. ••• Decarboxyted cannabinoid concentration is calculated from the equation XXX_{total} = 0.877 x XXX_a + XXX ••• Standards are used to calibrate the resulting data and estimate error using a standard estimate of error method; this is combined with error from weighing and dilution using the propagation of error formula S_y² = Σ (∂f/∂i)² s_i² where i is the contributor to error. The 95% confidence range is calculated from the equation: (concentration) ± t_{CL90} X S_y. Sampling error is not

Certified by:

Kyle Larson, MSc (Biology)
 Deputy Director
 6073 US93N, Olney MT 59927
 406-881-2019 rdb@stwlabs.com

Printed 3/4/2020 1:42 PM

prallethrin	0.00 ppm	<10ppb
propiconazole	0.00 ppm	<10ppb
pyridaben	0.00 ppm	<10ppb
spiroxamine	0.00 ppm	<10ppb
tebuconazole	0.00 ppm	<10ppb
thiacloprid	0.00 ppm	<10ppb
thiamethoxam	0.00 ppm	<10ppb

CTLA ID: 20904
 Date Received: 9/1/2020
 Sample Name: OEVOO 1350 Mint Packaging
 Lot Number: 200831A
 Customer:

Analysis	Method	MDL Specification	Result	Units
Rapid Complete Micro				
Total Plate Count	USP <2021>	100 Report	<100	cfu/g
Total Coliforms	BAM CH.4	10 Report	<10	cfu/g
<i>E. coli</i>	USP <2022>	Report	Negative	
<i>Salmonella</i>	USP <2022>	Report	Negative	
<i>Staphylococcus aureus</i>	USP <2022>	Report	Negative	
Rapid Yeast and Mold	AOAC 997.02	10 Report	<10	cfu/g

9/3/2020

DATE



Quality Manager

Specifications provided by the Customer. Results with an asterisk (*) denote Specifications should be reviewed by the Customer. This Certificate of Analysis represents data for the sample submitted and does not constitute a guarantee of quality for the entire product from which it was taken. These results are provided for the benefit of the Customer. MDL = Method Detection Limit.