

CERTIFICATE OF ANALYSIS

PRODUCT NAME: CBD Tincture - Orange
PRODUCT STRENGTH: 900 mg
FILL LOT NUMBER: 200814A
TINCTURE BATCH 200826K
BEST BY DATE: 02/27/2022
HEMP EXTRACT LOT*: [B0313-001](#)

Click on the links to view third-party reports

Physical Attributes

Test	Method	Specification	Results
Color	SOP-100	Golden to Amber	PASS
Odor	SOP-100	Coconut and hemp, orange	PASS
Appearance	SOP-100	Golden to Amber oil in brown glass bottle with dropper	PASS
Primary Package Eval.	SOP-132	Container clean and free of filth. Container caps tight and shrink bands intact	PASS
Secondary Package Eval.	SOP-132	Labeling Compliance Checked, Cartons sturdy and clean. Sufficient cushion material exists. Box taped and secure.	PASS

Review of Third-Party Analysis

Panel	Method	Specification	Results*	Pass/Fail
Potency - Total CBD	SOP-111	900-1,125 mg CBD LOQ** : 10 PPM† (0.001%)	34.6mg	PASS
Potency - D9-THC	SOP-111	None Detected LOQ: 10 PPM (0.001%)	ND	PASS
Compliant Pesticide Panel	SOP-111	WIP-100008 : Product specification for Tinctures, Oregon Action limits apply	Below LOQ	PASS
Microbial - Stec E.Coli	SOP-111	Complies with USP 61/62	Below LOQ	PASS
Microbial - Salmonella	SOP-111	Complies with USP 61/62	Below LOQ	PASS
Microbial - Yeast and Mold	SOP-111	Complies with USP 61/62	Below LOQ	PASS
CA Compliant Heavy Metal Panel	SOP-111	Arsenic (As): ≤1.5 PPM Cadmium (Cd): ≤0.5 PPM Mercury (Hg): ≤1.0 PPM Lead (Pb): ≤0.5 PPM	ND	PASS

**Level of Quantitation, † Parts Per Million

Quality Certified Kei Horikawa 9/8/2020
 Kei Horikawa Date
 Manager of Quality Assurance

BS MCT Orange 900

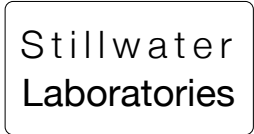
Certificate of Analysis



total cannabinoids	Δ9-THC	THCa	total THC
36 mg	0.00 mg	0.00 mg	0.00 mg
per	CBD	CBDa	total CBD
mL	34.6 mg	0.00 mg	34.6 mg

Lot# 200814A

This Product Has Been Tested and Complies with 7USC1639o(1) Definition of Hemp



https://portal.a2la.org/scopepdf/4961-01.pdf

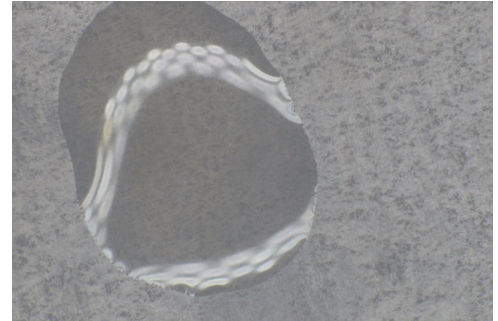
Sample Handling

test ID	sample wt
type concentrate	order 8099
lab ID 0HK05	sample date 8/17/2020
unit mL	unit weight 0.9 g

Methods

	method	equipment
weights	MSP-7.3.1.3	AUX120.1
potency	MSP-7.5.1.5	LC-2030
terpenes	MSP-7.5.1.7	QP2020/HS20
pesticides	MSP-7.5.1.8	LC-8060
mycotoxins	MSP-7.5.1.8	LC-8060
microbial	MSP-7.5.1.1	AriaMx RTPCR
solvents	MSP-7.5.1.6	QP2020/HS20
metals	MSP-7.5.1.1	ICPMS2030

concentrate



Potency	per mL	estimated error	Terpenes	%	estimated error	%	estimated error
tetrahydrocannabinolic acid (THCa)	0%	0.00 mg ± 0.02 mg	terpenes not tested / not required				
Δ ⁹ -tetrahydrocannabinol (Δ ⁹ THC)	0%	0.00 mg ± 0.02 mg					
Δ ⁸ -tetrahydrocannabinol (Δ ⁸ THC)	0%	0.00 mg ± 0.02 mg					
tetrahydrocannabivarin (THCv)	.14%	1.31 mg ± 0.03 mg					
cannabidiolic acid (CBDa)	0%	0.00 mg ± 0.02 mg					
cannabidiol (CBD)	3.67%	34.6 mg ± 0.15 mg					
cannabidivarin (CBDv)	0%	0.00 mg ± 0.02 mg					
cannabigerolic acid (CBGa)	0%	0.00 mg ± 0.02 mg					
cannabigerol (CBG)	0%	0.00 mg ± 0.02 mg					
cannabinol (CBN)	0%	0.00 mg ± 0.02 mg					
cannabichromene (CBC)	0%	0.00 mg ± 0.02 mg					

Pesticides (MT)	MT limit	0HK05	LOQ	Pesticides (other)	0HK05	LOQ
-----------------	----------	-------	-----	--------------------	-------	-----

pesticides not tested / not required

not tested / not required

Toxic Metals	MT limit	0HK05	LOQ
--------------	----------	-------	-----

metals not tested / not required

Microbial	MT limit	0HK05	LOQ
-----------	----------	-------	-----

microbial not tested

Comments

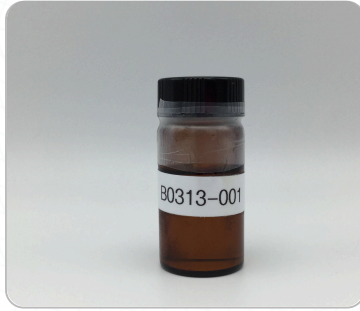
• All testing was completed onsite at 6073 US93N, Olney MT • Potency (cannabinoid concentration) is calculated from the equation: [cannabinoid] = [cannabinoid]_{HPLC} x volume_{dilution} / m_{dry}. Terpene concentration is calculated from the equation: [terpene] = (terpene mass)_{GCMS} / m_{dry}. •• Decarboxyted cannabinoid concentration is calculated from the equation XXX_{total} = 0.877 x XXXa + XXX ••• Standards are used to calibrate the resulting data and estimate error using a standard estimate of error method; this is combined with error from weighing and dilution using the propagation of error formula s_g² = Σ(∂f/∂i)²s_i² where i is the contributor to error. The 95% confidence range is calculated from the equation: (concentration) ± t_{CL90} x s_g. Sampling error is not

Certified by:

Kyle Larson, MSc (Biology)
Deputy Director
6073 US93N, Olney MT 59927
406-881-2019 rdb@stwlabs.com



Order #: 51103
 Order Name: B0313-001
 Batch #: B0313-001
 Complete: 03/20/2020



N/D

D9-THC

88.92%

Total CBD

Delta-9-Tetrahydrocannabinol	0%
Tetrahydrocannabinolic Acid	0%
Cannabidiol	89%
Cannabidiolic Acid	0%
Cannabidivarin	0%
Cannabichromene	0%
Cannabinol	0%
Cannabigerol	5%
Cannabigerolic Acid	0%
Delta-8-Tetrahydrocannabinol	0%
Tetrahydrocannabivarin	0%

Cannabinoids

	LOQ	weight(%)	mg/g
D9-THC	< 0.05%	N/D	N/D
THCA	< 0.05%	N/D	N/D
CBD	< 0.05%	< 88.92%	< 889.24
CBDA	< 0.01%	N/D	N/D
CBDV	< 0.01%	N/D	N/D
CBC	< 0.01%	N/D	N/D
CBN	< 0.01%	N/D	N/D
CBG	< 0.01%	< 4.51%	< 45.23
CBGA	< 0.01%	N/D	N/D
D8-THC	< 0.05%	N/D	N/D
THCV	< 0.05%	N/D	N/D
TOTAL D9-THC	N/A	< N/D	< N/D
TOTAL CBD*	N/A	< 88.92%	< 889.24
TOTAL CANNABINOIDS	N/A	< 93.44%	< 934.47

Metal

	Action Level	Result
ARSENIC (AS)	200	B/LOQ
CADMIUM (CD)	200	B/LOQ
MERCURY (HG)	100	B/LOQ
LEAD (PB)	500	B/LOQ

Limit of Quantitation (LOQ) is 85 ppb

Residual Solvents

Solvent Name	Action Level	Results	LOQ
ACETONE	5,000	N/D	280
ACETONITRILE	410	N/D	50
BENZENE	1	N/D	1
BUTANE	5,000	N/D	100
CHLOROFORM	1	N/D	1
DICHLOROETHANE	1	N/D	1
DICHLOROMETHANE	1	N/D	1
ETHANOL	5,000	N/D	280
ETHYL ACETATE	5,000	N/D	280
ETHYL ETHER	5,000	N/D	280

Solvent Name	Action Level	Results	LOQ
ISOPROPYL ALCOHOL	5,000	N/D	280
METHANOL	3,000	B/LOQ	200
N-HEPTANE	5,000	N/D	280
N-HEXANE	290	B/LOQ	36
PENTANE	5,000	N/D	280
PROPANE	5,000	N/D	40
TOLUENE	890	N/D	106
TRICHLOROETHENE	1	N/D	0
XYLENES	2,170	N/D	260

Pesticide

Pesticide Name	Action Level	Results	LOQ
ABAMECTIN B1A	0.100	N/D	0.02
ACEPHATE	0.100	N/D	0.004
ACEQUINOCYL	0.100	N/D	0.004
ACETAMIPRID	0.100	N/D	0.02
ALDICARB	0.100	N/D	0.02
AZOXYSTROBIN	0.100	N/D	0.004
BIFENAZATE	0.100	N/D	0.02
BIFENTHRIN	3.000	N/D	0.02
BOSCALID	0.100	N/D	0.02
CARBARYL	0.500	N/D	0.012
CARBOFURAN	0.100	N/D	0.004
CHLORANTRANILIPROLE	10.000	N/D	0.02
CHLORPYRIFOS	0.100	N/D	0.004
CLOFENTEZINE	0.100	N/D	0.004
DAMINOZIDE	0.100	N/D	0.02
DIAZANON	0.100	N/D	0.004
DICHLORVOS	0.100	N/D	0.02
DIMETHOATE	0.100	N/D	0.004
DIMETHOMORPH	2.000	N/D	0.02

Pesticide Name	Action Level	Results	LOQ
ETHOPROPHOS	0.100	N/D	0.004
ETOFENPROX	0.100	N/D	0.004
ETOXAZOLE	0.100	N/D	0.04
FENHEXAMID	0.100	N/D	0.02
FENOXYCARB	0.100	N/D	0.02
FENPYROXIMATE	0.100	N/D	0.004
FIPRONIL	0.100	N/D	0.012
FLONICAMID	0.100	N/D	0.05
FLUDIOXONIL	0.100	N/D	0.012
HEXYTHIAZOX	0.100	N/D	0.02
IMAZALIL	0.100	N/D	0.02
IMIDACLOPRID	5.000	N/D	0.02
KRESOXIM-METHYL	0.100	N/D	0.04
MALATHION	0.500	N/D	0.02
METALAXYL	2.000	N/D	0.004
METHIOCARB	0.100	N/D	0.02
METHOMYL	1.000	N/D	0.004
MEVINPHOS	0.100	N/D	0.004
MYCLOBUTANIL	0.100	N/D	0.02

Pesticide Name	Action Level	Results	LOQ
NALED	0.100	N/D	0.02
OXAMYL	0.500	N/D	0.004
PACLOBUTRAZOL	0.100	N/D	0.02
PERMETHRINS	0.500	N/D	0.02
PHOSMET	0.100	N/D	0.02
PRALLETHRIN	0.100	N/D	0.02
PROPICONAZOLE	0.100	N/D	0.04
PROPOXUR	0.100	N/D	0.004
PYRETHRINS (PYRETHRIN I)	0.500	N/D	0.02
PYRIDABEN	0.100	N/D	0.02
SPINETORAM	0.100	N/D	0.004
SPINOSAD	0.100	N/D	0.004
SPIROMESIFEN	0.100	N/D	0.02
SPIROTETRAMAT	0.100	N/D	0.004
SPIROXAMINE	0.100	N/D	0.004
TEBUCONAZOLE	0.100	N/D	0.02
THIACLOPRID	0.100	N/D	0.004
THIAMETHOXAM	5.000	N/D	0.004
TRIFLOXYSTROBIN	0.100	N/D	0.004

Andrew Hall

Dr. Andrew Hall, Ph.D.,
 Chief Scientific Officer

Ben Witten

Ben Witten, MS, MT.,
 Lab Director

Green Scientific Labs
 info@greenscientificlabs.com
 1-833 TEST CBD



CTLA ID: 20902
 Date Received: 9/1/2020
 Sample Name: BS MCT Orange 900 30 ml
 Lot Number: 200826K
 Customer:

Analysis	Method	MDL Specification	Result	Units
Rapid Complete Micro				
Total Plate Count	USP <2021>	100 Report	<100	cfu/g
Total Coliforms	BAM CH.4	10 Report	<10	cfu/g
<i>E. coli</i>	USP <2022>	Report	Negative	
<i>Salmonella</i>	USP <2022>	Report	Negative	
<i>Staphylococcus aureus</i>	USP <2022>	Report	Negative	
Rapid Yeast and Mold	AOAC 997.02	10 Report	<10	cfu/g

9/3/2020

DATE



Quality Manager

Specifications provided by the Customer. Results with an asterisk (*) denote Specifications should be reviewed by the Customer. This Certificate of Analysis represents data for the sample submitted and does not constitute a guarantee of quality for the entire product from which it was taken. These results are provided for the benefit of the Customer. MDL = Method Detection Limit.